
Power Steering Pump to Steering Gear Pressure Line — 4.0L, 4.6L

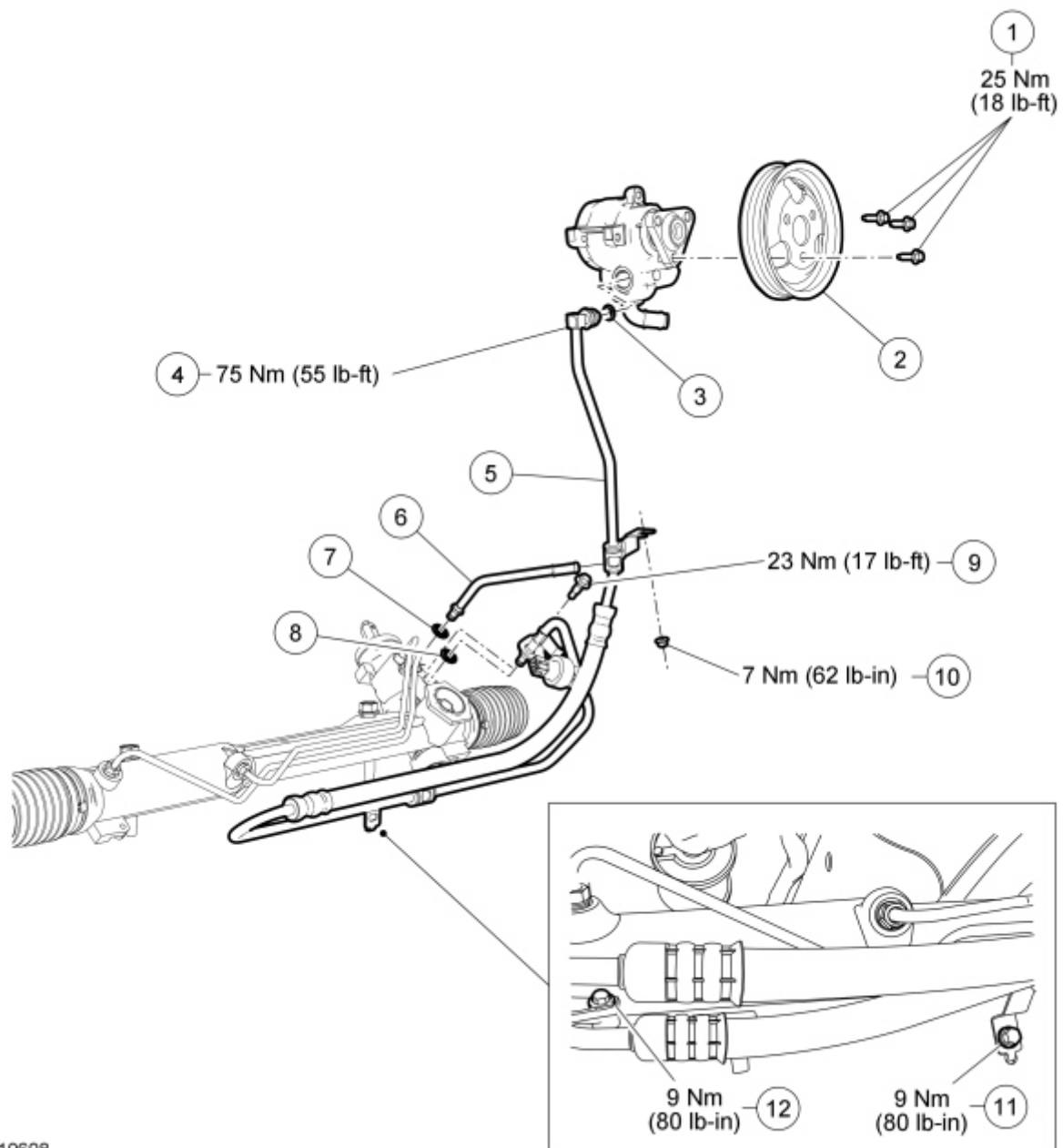
Special Tool(s)

 ST1444-A	Installer Set, Teflon® Seal 211-D027 (D90P-3517-A) or equivalent
---	--

Material

Item	Specification
MERCON® V Automatic Transmission Fluid XT-5-QM (or XT-5-QMC) (US); CXT-5-LM12 (Canada)	MERCON® V

NOTE: 4.0L engine shown, 4.6L engine similar.



N0110608

Item	Part Number	Description
1	N605784	Power steering pump pulley bolts
2	3A733	Power steering pump pulley
3	388898	Teflon® seal
4	—	Pressure line-to-pump fitting (part of 3A719)
5	3A719	Power steering pressure line
6	3A713	Power steering fluid cooler return line
7	3F886-BA	O-ring seal
8	3F886-AA	O-ring seal
9	W707622	Power steering line clamp plate bolt
10	W520101	Pressure line bracket-to-A/C compressor stud nut
11	W505255	Pressure line bracket-to-crossmember bolt
12	W505255	Power steering pressure line bracket-to-steering gear bolt (4.6L)

Removal and Installation

NOTICE: When repairing the power steering system, care should be taken to prevent the entry of foreign material or failure of the power steering components may result.

4.0L and 4.6L engines

1. With the vehicle in NEUTRAL, position it on a hoist. For additional information, refer to [Section 100-02](#).
2. Remove the Air Cleaner (ACL) outlet pipe. For additional information, refer to [Section 303-12](#).

4.0L engine

3. Loosen the 3 power steering pump pulley bolts.
4. Rotate the tensioner and remove the accessory drive belt from the power steering pump pulley.
5. Remove the 3 bolts and the power steering pump pulley.
 - To install, tighten to 25 Nm (18 lb-ft).
6. Remove the pressure line-to-A/C compressor stud nut.

4.6L engine

7. Remove the power steering pump pulley. For additional information, refer to [Power Steering Pump Pulley — 4.6L, 5.4L](#) in this section.
8. Remove the pressure line bracket-to-pump stud nut.
 - To install, tighten to 7 Nm (62 lb-in).
9. Remove the pressure line bracket-to-steering gear bolt.
 - To install, tighten to 9 Nm (80 lb-in).

4.0L and 4.6L engines

10. Remove the pressure line bracket-to-crossmember bolt.
 - To install, tighten to 9 Nm (80 lb-in).
11. **NOTE:** A new Teflon® seal must be installed.

Disconnect the pressure line-to-pump fitting.

- Discard the Teflon® seal.
- To install, tighten to 75 Nm (55 lb-ft).

12. **NOTICE:** When installing the pressure and return lines to the steering gear, make sure the lines are fully seated into the steering gear prior to installing the clamp plate. Additionally, make sure that the clamp plate surfaces are free of foreign material. DO NOT exceed the specified torque when tightening the clamp plate. Leakage and/or failure of the power steering components may occur.

NOTE: New O-ring seals must be installed any time the lines are disconnected from the steering gear.

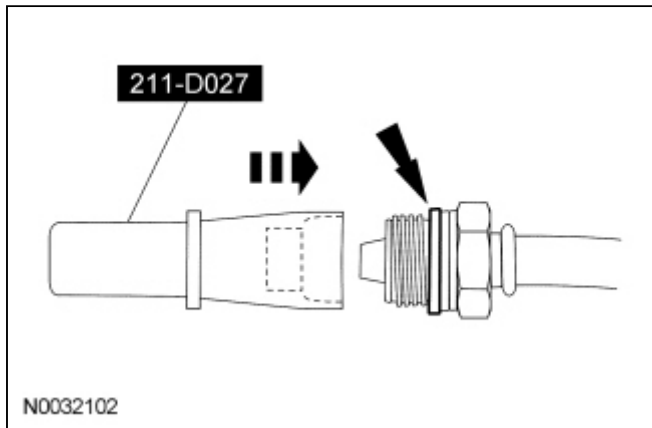
Remove the power steering line clamp plate bolt, rotate the clamp plate and remove the power steering pressure line.

- Discard the O-ring seal.
- To install, tighten to 23 Nm (17 lb-ft).

13. To install, reverse the removal procedure.

NOTE: New Teflon® seals must be installed.

Using the Teflon® Seal Installer Set, install a new Teflon® seal to the pressure line fitting.



14. For additional information on the accessory drive belt routing, refer to [Section 303-05](#).
 - Fill the power steering system. For additional information, refer to [Section 211-00](#).
-